

If you cannot see this email properly, paste this link in your browser: <http://mootexpress.com/display.php?M=124693&C=f33272d7c358eeb701a22916c0c81fe9&L=95&N=295>
Don't let our email be treated as spam, simply add no-reply@henryandjames.com to your address book.



[PROPERTY SEARCH](#) [ABOUT US](#) [OUR TEAM](#) [NEWS & PRESS](#) [TESTIMONIALS](#) [CONTACT US & REGISTER](#)

ESTABLISHED IN 1950 HENRY & JAMES IS ONE OF LONDON'S FINEST INDEPENDENT ESTATE AGENCIES



NEWSLETTER, SEPTEMBER 2017

Welcome to our first Royal Special. As Kate and William share their baby news, we celebrate London's royal past and present. Here you will find palatial properties in royal stumping grounds. London's hidden Mail Rail opens for tours beneath the capital, whizzing through tunnels and stalactites. And James Bailey, Chief Executive of Henry & James, comments on the signs of a resurgence and stability in the Royal Borough.

Discover all the latest news and opinions in our September newsletter.



LATEST NEWS



WE'RE GOING UNDERGROUND: LONDON'S BEST KEPT SECRETS

One of the most intriguing relics of 'hidden London' opens to the public this month. It is known as the Mail Rail, a network of underground tunnels located underneath the Royal Mail's Mount Pleasant sorting office. Here, for nearly a century, mail was transported across the capital, on miniature trains. All over London there are other subterranean curiosities. Here is a selection. [READ ON](#)

LIVE LIKE A ROYAL: PALATIAL

As the Duke and Duchess of Cambridge announce their baby news, and Prince George starts school, we take a look at some palatial properties in prime royal stumping grounds over the ages. Here are homes with princely proportions and regal



PROPERTIES FOR SALE

rooms for sale or to let across Belgravia, Chelsea and Kensington. [READ ON](#)



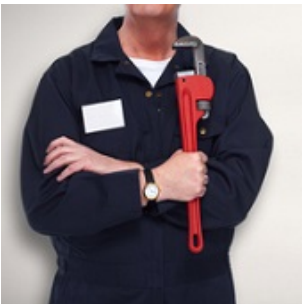
LONDON DESIGN FESTIVAL: PROPERTIES WITH PANACHE

The London Design Festival launches on September 16, celebrating the city as the design capital of the world. At locations across the capital, activities, workshops, installations and talks will challenge and inspire you. If you are enthused by the energy and ideas emanating from this annual event, take a look at our pick of the best designer homes for sale this autumn. [READ ON](#)



MEET THE NEIGHBOURS: MELVYN HAYS, ACTOR

“It Ain’t Half Hot Mum” was a classic television series popular during the Seventies and early Eighties. More than 50 episodes were filmed with famous names, including Windsor Davies, Donald Hewlett and Melvyn Hayes. Here Melvyn reflects on growing up in London, his dream home and his love of acting. [READ THE INTERVIEW](#)



WHY WE ALL NEED BACK-UP

“You never know when disaster may strike. It might be a dripping tap, a strange sound from the washing machine or the intercom is not working,” says Steve Cook, Head of Lettings and Management. “When disaster strikes, whether big or small, it’s time to call in a specialist. But through no fault of their own, they may be delayed or need to re-schedule. The solution is to always have a back-up. In the property management team, we are prepared for the worse. If a plumber, electrician or roofer is not able to make an appointment, then we have another supplier who can help. It’s something we have learnt to do over our 66 years working in central London. And remember, now is a good time to have your boiler tested. After the summer, when London saw the hottest June day (34.5C) in 40 years, boilers sat silent. Make sure yours is in working order and ready for the winter ahead.”



MARKET WATCH: SIGNS OF STABILITY FOR LONDON HOUSING MARKET

James Bailey, Chief Executive of Henry & James writes about the resurgence of the London housing market as investors turn to bricks and mortar for added certainty. [READ ON](#)



PROPERTY OF THE MONTH: HOME FOR A PRINCE OR PRINCESS

September means one thing: back to school. Our Property of the Month is located between five good schools: Knightsbridge, Hill House, Sussex House, Cameron House and Eaton Square School. The Chelsea town house has a private garden, three bedrooms and two bathrooms for when there is a rush for school in the morning. The property in Haker Street, London SW3 is on the market for £3,450,000. It is a home fit for a prince or princess in SW3. [Take a tour](#)



CONFESSIONS OF AN ESTATE AGENT: MANS BEST FRIEND

“My love of dogs was pushed to the limit this month, when I attended a viewing on Lowndes Square, Belgravia,” explains James Bailey, Chief Executive of Henry & James. “The owner, who was in her later years, fed her adorable little pug some sugared almonds. He munched his way through several of the sweet treats. Everything was going well, when suddenly one got stuck in the back of his throat. I went straight into action, patting the pug on his back, then the almond flew out of his mouth on to the carpet. The owner was in tears because the dog was the most precious thing in her life, and offered me lunch to say thank you. Luckily, I attended a first aid course earlier this summer with the rest of the Motcomb Street team, so knew what to do in an emergency.”



PARTY TIME: MOTCOMB STREET RE-OPENS

Live music, food, wine and late-night shopping will mark the re-opening of Motcomb Street in Belgravia. Around 15 food stalls made up of local cafes and restaurants, will be serving local food. Music will play throughout the evening with three bands from 5-10pm on 27 September. It will also give you the opportunity to see the makeover of The Alfred Tennyson, one of Belgravia’s best pubs. There is everything from beers and rosés to exciting menus to inspire. Upstairs, the dining room is cool, calm and contemporary with muted tones, vintage treasures and classic dishes. If the Poet Laureate could see the pub today, he would surely welcome Motcomb Street’s latest chapter. The Motcomb Street party is a highlight in the Belgravia social calendar. [More information here.](#)



BOWLED OVER: CONGRATS TO HARTLEY WINTNEY

It has been an exciting season for the Hartley Wintney Cricket Club. The team have gone from strength to strength over the past few months. Now we are pleased to announce that the 1st XI have been promoted to Division 1 after their final match of the season. Congratulations to all the players. We are proud to be the sponsors of one of the oldest cricket clubs in the country. Rain may occasionally stop play, but it does not dampen our spirits on the cricket field.

PS ...

Follow us on social media for house price news, inspiring interiors and the latest properties for sale.

[Twitter](#)

[Facebook](#)



[Instagram](#)
[LinkedIn](#)

FEATURED PROPERTIES

SEARCH FOR PROPERTIES



List view



Thumb view



Map view

Eccleston Mews SW1X

£2,950,000



South Eaton Place SW1W

£1,695 P/W



Lowndes Square SW1X

£1,495 P/W



OUR ADDRESS

BELGRAVIA OFFICE

1 Motcomb Street

London

SW1X 8JX

Tel: +44 (0) 20 7235 8861

belgraviaoffice@henryandjames.co.uk

[View map](#)

[Unsubscribe](#) if you don't wish to receive any more email communication from Henry & James

design by Moot

Henry & James values your privacy and personal data.
All information you provide will be protected by our Privacy Policy.

Max Henry Limited Registered Number 00485145 Registered Address 1 Motcomb Street, London SW1X 8JX